

Leptin resistance

H. PIJL

Leptin is primarily produced by adipocytes. Its plasma concentration varies in proportion to fat mass. Binding of leptin to its receptors in the hypothalamus and brain stem orchestrates the activity of neuroendocrine ensembles that inhibit food intake and increase energy expenditure. Loss of function mutations of the leptin- or leptin receptor gene are associated with obesity and insulin resistance in rodents. Leptin deficient humans are also morbidly obese, which indicates that leptin plays a critical role in the control of energy balance in man as well as in rodents. Circulating leptin levels are high in most obese humans and apparently do not act to reduce adipose stores to their 'normal' size. Emerging evidence indicates that high fat feeding induces leptin resistance in rodents. Clinical evidence supports the notion that obese humans are leptin resistant as well. Leptin resistance may not only explain the propensity of people to grow obese, it may also underlie various metabolic features of obesity. This paper reviews current perceptions of the causes and consequences of leptin resistance in rodents and man.

Keywords: leptin, adipocytes, insulin resistanc, obesity

Leptin is primarily produced by adipocytes and it acts in the brain to control energy balance and fuel flux via neuronal circuits in hypothalamic and brain stem nuclei. Plasma leptin levels vary in proportion to fat mass in rodents and humans, where large adipose stores are associated with high circulating leptin concentrations. Binding to leptin receptors in the hypothalamus orchestrates the activity of a myriad of neurons that are critically involved in the regulation of food intake and metabolism (1, 2). An increase of the plasma leptin concentration inhibits food intake and stimulates energy expenditure so as to curtail further growth of adipose stores. Conversely, reduction of circulating leptin levels in case of caloric restriction and loss of adipose tissue unleashes appetite and restrains energy expenditure to prevent further weight loss. Genetically engineered, leptin deficient *ob/ob* mice are hyperphagic, insulin resistant and extremely obese (3, 4). They also have low energy expenditure and body temperature. Loss of function mutations of the leptin receptor are asso-

ciated with a similar phenotype in mice and rats (5, 6). In analogy, leptin deficient humans are marked by morbid obesity that manifests in childhood, which illustrates the pivotal role of leptin in the control of energy balance in man (7). However, mutations of the leptin gene are very rare in humans. Indeed, the majority of obese individuals has high circulating leptin levels, as expected in light of their large adipose mass (8, 9). Why do high plasma leptin levels not suppress appetite and increase energy expenditure so as to reduce energy stores to 'normal' in obese humans? Probably because obese humans are leptin resistant. This paper delineates the causes and consequences of leptin resistance in rodents and humans.

Mechanism of action

The leptin receptor (LEPR) is a single membrane spanning receptor that belongs to a family of class I cytokine receptors, including interleukin 6 (IL-6), leukemia inhibitory factor (LIF) and granulocyte-colony stimulating factor (GCSF) (10). Six splice variants ('a' to 'f'), that differ in their intracellular tails, but share identical extracellular binding domains, have been identified to date. Only the 'long isoform', LEPRb, has intracellular motifs necessary for activation of the Janus Kinase (JAK) / Signal Transducer and Activator of Transcription (STAT) signal transduction pathway (11). Binding of leptin to the LEPRb leads to autophosphorylation of JAK 1 and 2 and subsequent recruitment of STAT3. Tyrosine phosphorylated STAT3 transactivates target genes by binding to specific promoter elements (12). Activation of LEPRb also promotes expression of suppressor of cytokine signalling 3 (SOCS-3), which is a negative regulator of leptin signalling and probably serves to switch off or dampen leptin signal transduction (13).

The LEPRb is abundant in various hypothalamic nuclei that are involved in the control of food intake and energy balance, including the arcuate, dorsomedial, ventromedial and lateral nuclei (14). Leptin receptors have also been identified in various other brain areas, including the nucleus of the solitary tract (15) and the caudal brain stem (16, 17). In these nuclei, leptin regulates the transcription and release of a host of distinct neuropeptides that can be categorized as anabolic or catabolic. Anabolic neuropeptides include neuropeptide Y (NPY), Agouti related peptide (AgRP), orexins (ORX) and melanin concentrating hormone (MCH). Genes encoding proopiomelanocortin (POMC), cocaine and amphetamine regulated transcript (CART), and corticotrophin releasing hormone (CRH) are major targets of leptin driving catabolic pathways (18).

Department of Endocrinology, Leiden University Medical Center

Correspondentie: dr. H. Pijl, LUMC, Dept of Endocrinology, C4-83, PO Box 9600, 2300 RC The Netherlands
E-mail: h.pijl@lumc.nl

The blood-brain-barrier (BBB) protects the brain against entry of toxins and coordinates the transit of nutrients and hormones from blood to brain (and vice versa). Various periventricular brain areas, including the median eminence and area postrema, lack a functional BBB (19). The arcuate nucleus, a major target of leptin, lies adjacent to the median eminence. This probably allows leptin to access the arcuate freely via diffusion through the median eminence (20). Transit of leptin from blood to other brain areas requires an active and saturable transport process, most likely mediated by short isoforms of the leptin receptor (LEPRa) that are abundant in the chorioid plexus and brain microvasculature (14, 20).

Leptin enters the brain to activate catabolic neural circuits and inhibit anabolic pathways. Thus, when circulating leptin levels are high because fat stores are full, POMC neurons in the arcuate are active and adjacent NPY neurons are silent. These neurons project to the paraventricular nucleus (PVN) and various other hypothalamic nuclei that regulate neuroendocrine ensembles involved in the control of food intake and fuel flux and energy expenditure. In particular, pituitary hormone release and activity of the autonomic nervous system are controlled by hypothalamic leptin signalling (21, 22). Simultaneously, leptin modulates neuronal activity in the brainstem (23). Via these various neuronal circuits, leptin inhibits food intake, increases energy expenditure and reinforces insulin action.

Metabolic and behavioural effects of leptin

Leptin deficient *ob/ob* animals are hyperphagic, insulin resistant and morbidly obese. Their metabolic rate and core body temperature are low. Leptin replacement restores all of these metabolic anomalies (4, 24, 25). Also, *ob/ob* mice are hypotensive despite their obesity (26), and leptin infusion increases arterial blood pressure and heart rate in rats through activation of lumbar and renal sympathetic nerves (27, 28).

A myriad of data indicates that the effects of leptin on food intake and body weight are largely mediated by its impact on arcuate nucleus NPY and POMC neurons. NPY potently stimulates feeding and reduces energy expenditure, whereas α - and β -melanocyte stimulating hormones (α -/ β - MSH), split products of the POMC polypeptide precursor, inhibit food intake and increase metabolic rate and blood pressure (18, 29, 30). Leptin suppresses NPY neuronal activity (31, 32), while it promotes POMC expression (33), thereby reducing body weight and increasing arterial pressure. The JAK/STAT cascade alluded to above is responsible for intracellular translation of leptin's impact on NPY and POMC gene expression.

Since *in vivo* measures of insulin sensitivity correlate strongly with total and regional fat mass in animals and humans (34), it is tempting to attribute insulin resistance in *ob/ob* mice and leptin deficient humans to their obese phenotype. However, there is evidence to suggest that leptin impacts on glucose metabolism through mechanistic routes that are independent of its

effect on food intake and body weight. Indeed, intraperitoneal administration of leptin acutely reduces glycemia and insulinemia and restores glucose tolerance without affecting body weight in *ob/ob* mice. Injection of a low dose of leptin into the ventromedial hypothalamus of lean rats promotes basal (insulin independent) glucose uptake in various tissues, suggesting that the central nervous system is a critical target of leptin in the control of glucose metabolism (35, 36). The neural routes that mediate leptin's effects on food intake and energy expenditure may also modulate insulin action. Indeed, intracerebroventricular (i.c.v.) administration of NPY induces insulin resistance of the liver (37) and activation melanocortin receptors by melanotan II, an analogue of α -MSH, reinforces insulin action in muscle and adipose tissue (38).

Importantly, leptin and POMC appear to have similar and clinically very relevant effects on metabolism in man. Indeed, loss of function mutations of the leptin and POMC genes are associated with hyperphagia, severe obesity and insulin resistance in humans (39, 40). Also, mutations of melanocortin receptors, mediating the effects of α - and β - MSH on body weight, are the commonest form of monogenetic obesity in humans, where mutations leading to complete loss of function are associated with a more severe phenotype (41). Furthermore, leptin reverses insulin resistance in patients with congenital lipodystrophy, a disease that is marked by low circulating leptin concentrations (42-44), indicating that it favourably affects insulin action in humans as well as in rodents.

These data clearly show that leptin has an important role in the regulation of feeding, energy expenditure, body weight and insulin action in rodents and man. However, circulating leptin levels are increased, and apparently fail to curtail the growth of adipose stores in obese humans (8, 9). How can this be explained? Emerging evidence indicates that high fat feeding induces leptin resistance in rodents and clinical data suggest that obese humans are also leptin resistant.

Leptin resistance

High fat fed murine models of obesity are widely accepted models of common human obesity, because high fat feeding in rodents recapitulates the metabolic and endocrine features of obesity in man. The circulating leptin concentration is high in diet induced obese (DIO) rats and mice (8, 45). Apparently, leptin does not curtail the progression of obesity in these animals, which suggests that it has less biological effect on food intake and metabolism. At least 3 mechanisms may be responsible for leptin resistance:

1. impaired transit of leptin across the BBB;
2. reduced number of leptin receptors in critical target sites, or
3. post-receptor signal transduction defects.

Initial experiments revealed that high fat feeding almost completely blocks the ability of plasma leptin to activate STAT-3 in hypothalamic nuclei (46). Accordingly, the hypophagic response to peripheral leptin administration is blunted in high fat fed mice (47). Subsequent studies show that leptin transport

across the BBB is reduced in high fat fed rats, although the mechanism remains unclear because LEPRa gene expression is normal in cerebral microvessels (48, 49). There is evidence to suggest that triglycerides may somehow be involved (50). Notably, caloric restriction restores leptin transit across the BBB to normal in DIO, indicating that the defect is reversible (48).

The hypophagic response to i.c.v. leptin administration in rats is also clearly blunted in DIO rats (51), which indicates that high fat feeding impairs leptin signal transduction at the level of the receptor or beyond. Indeed, the LEPRb receptor number is reduced in the hypothalamus of rats that are prone to grow obese on a high fat diet even before they gain weight (52). Moreover, *ex vivo* binding of leptin is clearly impaired in the hypothalamus of DIO rats (53), and the number of LEPRb receptors is also reduced in the hypothalamus of DIO mice (54). Caloric restriction reverses deficits of LEPRb gene expression and protein in DIO rats (55). Other studies reveal that leptin resistance of aging is also associated with reduced hypothalamic LEPRb protein (56). These data strongly suggest that LEPRb number is reduced in high fat fed leptin resistant animals and that the defect can be restored by caloric restriction.

There is also data to indicate that high fat feeding compromises post-receptor cascades involved in leptin signal transduction. SOCS-3, which is induced by activation of the LEPRb, blocks leptin-induced tyrosine phosphorylation of JAK2 (57), and thereby partakes in an intracellular negative feedback loop to curtail leptin signal transduction (13). Neural cell-

specific deletion of SOCS-3 enhances hypothalamic STAT-3 phosphorylation in response to LEPRb activation. Moreover, neuron-specific SOCS-3 deficient mice are resistant to high fat diet induced obesity, and leptin inhibits feeding to a greater extent in these animals (58). Conversely, in high fat fed rodents, SOCS-3 expression is significantly increased, and leptin-induced STAT-3 phosphorylation is completely blocked in the arcuate nucleus of the hypothalamus, but not in other brain areas (59). The pathogenic mechanism explaining this phenomenon remains to be determined. However, *region specific* up-regulation of SOCS-3 expression in the arcuate nucleus most likely contributes to leptin resistance in high fat fed rodents.

Interestingly, selective leptin resistance may explain the development of hypertension in response to high fat feeding. Leptin elevates blood pressure by activating sympathetic outflow to the kidneys (60). Leptin's capacity to stimulate renal sympathetic nerve activity and elevate blood pressure is fully preserved in high fat fed rats, despite pronounced leptin resistance of feeding and body weight responses (61). This is probably because leptin's impact on sympathetic outflow to the kidney is mediated by the dorsomedial (DMH) and ventromedial hypothalamus (VMH) (62), whereas its effects on energy balance are primarily orchestrated by arcuate neurons. As noted above, high fat feeding up-regulates SOCS-3 in the arcuate, but not in other brain areas, including the DMH and VMH (59). Thus, hyperleptinemia, induced by leptin resistance of arcuate neurons and consequent gain of adipose mass, unabatedly stimulates renal sympathetic outflow to increase blood pressure in diet induced obese rats (61).

What is the evidence to support the presence of leptin resistance in obese humans? First of all, hyperleptinemia apparently does not curtail adipose tissue growth in the majority of obese individuals (8, 9). Secondly, exogenous leptin administration has virtually no effect on body weight in obese humans (63, 64). Thirdly, the cerebrospinal fluid / serum leptin concentration ratio is decreased in human obesity, suggesting that leptin transit across the BBB is impaired in obese individuals (65). Finally, the fact that renal norepinephrine spillover (a proximate measure of sympathetic outflow) is increased in obese humans, whereas measures of sympathetic activity in other tissues are reduced (66), is consistent with the presence of regional leptin resistance.

Clinical implications

As a direct corollary of leptin resistance, NPY expression is increased and POMC expression is reduced in the arcuate nucleus of obese, high fat fed animals (67-69). Obviously, these neuropeptides are responsible for the behavioural and metabolic ramifications of leptin resistance. This notion opens new alleys for the treatment of obesity. Indeed, NPY receptor antagonists (70) and melanocortin receptor agonists (71) are currently scrutinized for their potential as weight reducing and insulin sensitizing agents. Other possibilities include the use of peptides other

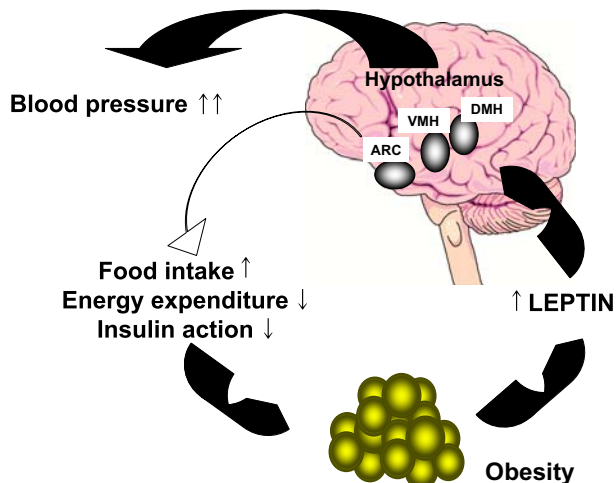


Figure 1. The concept of selective leptin resistance. High fat feeding leads to site specific disruption of leptin signal transduction cascades in the arcuate nucleus of the hypothalamus (ARC). Therefore, leptin does not properly inhibit food intake and fails to increase energy expenditure. Moreover, leptin resistance in the arcuate hampers systemic insulin action. Adipose stores grow and produce more leptin. Leptin signal transduction in the ventromedial (VMH) and dorsomedial (DMH) nuclei of the hypothalamus remains unabated. Through these nuclei, leptin activates renal sympathetic outflow and elevates blood pressure. Thus, selective leptin resistance can explain many of the metabolic features of human obesity.

than leptin that favourably modify NPY and POMC expression levels (72, 73) or drugs that redirect post-receptor leptin signal transduction (74).

Conclusion

Leptin plays an important role in the control of energy balance and insulin action in humans, as evidenced by the fact that leptin deficiency leads to morbid obesity and insulin resistance in childhood. Accordingly, leptin acts in the brain to inhibit food intake, increase energy expenditure and reinforce insulin action. Leptin deficiency is a very rare condition in humans. In contrast, many obese humans have a high circulating leptin concentration, which apparently does not prevent the growth of their adipose tissue, suggesting that leptin action is impaired. High fat feeding in rodents, which recapitulates many of the metabolic features of human obesity, unequivocally leads to (site specific) leptin resistance. Various clues suggest that obese humans are also leptin resistant. Clarification of the downstream neuroendocrine corollaries of leptin resistance may guide the development of novel strategies for the treatment of obesity.

Literature

1. Morton GJ, Cummings DE, Baskin DG, Barsh GS, Schwartz MW. Central nervous system control of food intake and body weight. *Nature* 2006; 443: 289-95.
2. Schwartz MW, Porte D, Jr. Diabetes, obesity, and the brain. *Science* 2005; 307: 375-9.
3. Zhang Y, Proenca R, Maffei M, Barone M, Leopold L, Friedman JM. Positional cloning of the mouse obese gene and its human homologue. *Nature* 1994; 372: 425-32.
4. Halaas JL, Gajiwala KS, Maffei M, Cohen SL, Chait BT, Rabinowitz D, Lallone RL et al. Weight reducing effects of the plasma protein encoded by the obese gene. *Science* 1995; 269: 543-6.
5. Chen H, Charlat O, Tartaglia LA, Woolf EA, Weng X, Ellis SJ, Lakey ND et al. Evidence that the diabetes gene encodes the leptin receptor: identification of a mutation in the leptin receptor gene in db/db mice. *Cell* 1996; 84: 491-5.
6. Chua SC, Jr., Chung WK, Wu-Peng XS, Zhang Y, Liu SM, Tartaglia L, Leibel RL. Phenotypes of mouse diabetes and rat fatty due to mutations in the OB (leptin) receptor. *Science* 1996; 271: 994-6.
7. Clement K, Vaisse C, Lahlou N, Cabrol S, Pelloux V, Cassuto D, Gormelen M et al. A mutation in the human leptin receptor gene causes obesity and pituitary dysfunction. *Nature* 1998; 392: 398-401.
8. Maffei M, Halaas JL, Ravussin E, Pratley RE, Lee GH, Zhang Y, Fei H et al. Leptin levels in human and rodent: measurement of plasma leptin and *ob* RNA in obese and weight reduced subjects. *Nature Med* 1995; 1: 1155-61.
9. Considine RV, Sinha MK, Heiman ML, Kriauciunas A, Stephens TW, Nyce MR, Ohannesian JP et al. Serum immunoreactive-leptin concentrations in normal-weight and obese humans. *N Engl J Med* 1996; 334: 292-5.
10. Tartaglia LA. The leptin receptor. *J Biol Chem* 1997; 272: 6093-6.
11. Peelman F, Couturier C, Dam J, Zabeau L, Tavernier J, Jockers R. Techniques: new pharmacological perspectives for the leptin receptor. *Trends Pharmacol Sci* 2006; 27: 218-25.
12. Fruhbeck G. Intracellular signalling pathways activated by leptin. *Biochem J* 2006; 393: 7-20.
13. Bjorbaek C, Elmquist JK, Frantz JD, Shoelson SE, Flier JS. Identification of SOCS-3 as a potential mediator of central leptin resistance. *Mol Cell* 1998; 1: 619-25.
14. Elmquist JK, Bjorbaek C, Ahima RS, Flier JS, Saper CB. Distributions of leptin receptor mRNA isoforms in the rat brain. *J Comp Neurol* 1998; 395: 535-47.
15. Elias CF, Kelly JF, Lee CE, Ahima RS, Drucker DJ, Saper CB, Elmquist JK. Chemical characterization of leptin-activated neurons in the rat brain. *J Comp Neurol* 2000; 423: 261-81.
16. Grill HJ, Schwartz MW, Kaplan JM, Foxhall JS, Breininger J, Baskin DG. Evidence that the caudal brainstem is a target for the inhibitory effect of leptin on food intake. *Endocrinology* 2002; 143: 239-46.
17. Mercer JG, Moar KM, Hoggard N. Localization of leptin receptor (Ob-R) messenger ribonucleic acid in the rodent hindbrain. *Endocrinology* 1998; 139: 29-34.
18. Niswender KD, Schwartz MW. Insulin and leptin revisited: adiposity signals with overlapping physiological and intracellular signaling capabilities. *Front Neuroendocrinol* 2003; 24: 1-10.
19. Pardridge WM. Receptor-mediated peptide transport through the blood-brain barrier. *Endocr Rev* 1986; 7: 314-30.
20. Bjorbaek C, Elmquist JK, Michl P, Ahima RS, van Bueren A, McCall AL, Flier JS. Expression of leptin receptor isoforms in rat brain microvessels. *Endocrinology* 1998; 139: 3485-91.
21. Ahima RS, Prabakaran D, Mantzoros C, Qu D, Lowell B, Maratos-Flier E, Flier JS. Role of leptin in the neuroendocrine response to fasting. *Nature* 1996; 382: 250-2.
22. Haynes WG, Morgan DA, Walsh SA, Mark AL, Sivitz WI. Receptor-mediated regional sympathetic nerve activation by leptin. *J Clin Invest* 1997; 100: 270-8.
23. Ellacott KL, Halatchev IG, Cone RD. Characterization of leptin-responsive neurons in the caudal brainstem. *Endocrinology* 2006; 147: 3190-5.
24. Campfield LA, Smith FJ, Guisez Y, Devos R, Burn P. Recombinant mouse OB protein: evidence for a peripheral signal linking adiposity and central neural networks. *Science* 1995; 269: 546-9.
25. Pellemounter MA, Cullen MJ, Baker MB, Hecht R, Winters D, Boone T, Collins F. Effects of the obese gene product on body weight regulation in *ob/ob* mice. *Science* 1995; 269: 540-3.
26. Mark AL, Shaffer RA, Correia ML, Morgan DA, Sigmund CD, Haynes WG. Contrasting blood pressure effects of obesity in leptin-deficient *ob/ob* mice and agouti yellow obese mice. *J Hypertens* 1999; 17: 1949-53.
27. Dunbar JC, Hu Y, Lu H. Intracerebroventricular leptin increases lumbar and renal sympathetic nerve activity and blood pressure in normal rats. *Diabetes* 1997; 46: 2040-43.
28. Shek EW, Brands MW, Hall JE. Chronic leptin infusion increases arterial pressure. *Hypertension* 1998; 31: 409-14.
29. Fan W, Boston BA, Kesterson RA, Hruby VJ, Cone RD. Role of melanocortinergic neurons in feeding and the agouti obesity syndrome. *Nature* 1997; 385: 165-8.
30. Dunbar JC, Lu H. Leptin-induced increase in sympathetic nervous and cardiovascular tone is mediated by proopiomelanocortin (POMC) products. *Brain Res Bull* 1999; 50: 215-21.
31. Wang Q, Bing C, Al Barazanji K, Mossakowaska DE, Wang XM, McBay DL, Neville WA et al. Interactions between leptin and hypothalamic neuropeptide Y neurons in the control of food intake and energy homeostasis in the rat. *Diabetes* 1997; 46: 335-41.
32. Mercer JG, Moar KM, Rayner DV, Trayhurn P, Hoggard N. Regulation of leptin receptor and NPY gene expression in hypothalamus of leptin-treated obese (*ob/ob*) and cold-exposed lean mice. *FEBS Lett* 1997; 402: 185-8.
33. Cowley MA, Smart JL, Rubinstein M, Cerdan MG, Diano S, Horvath TL, Cone RD et al. Leptin activates anorexigenic POMC neurons through a neural network in the arcuate nucleus. *Nature* 2001; 411: 480-4.

34. Abate N, Garg A, Peshock RM, Stray-Gundersen J, Grundy SM. Relationships of generalized and regional adiposity to insulin sensitivity in men. *J Clin Invest* 1995; 96: 88-98.
35. Kamohara S, Burcelin R, Halaas JL, Friedman JM, Charron MJ. Acute stimulation of glucose metabolism in mice by leptin treatment. *Nature* 1997; 389: 374-7.
36. Minokoshi Y, Haque MS, Shimazu T. Microinjection of leptin into the ventromedial hypothalamus increases glucose uptake in peripheral tissues in rats. *Diabetes* 1999; 48: 287-91.
37. van den Hoek AM, Voshol PJ, Karnekamp BN, Buijs RM, Romijn JA, Havekes LM, Pijl H. Intracerebroventricular neuropeptide Y infusion precludes inhibition of glucose and VLDL production by insulin. *Diabetes* 2004; 53: 2529-34.
38. Heijboer AC, van den Hoek AM, Pijl H, Voshol PJ, Havekes LM, Romijn JA, Corssmit EP. Intracerebroventricular administration of melanotan II increases insulin sensitivity of glucose disposal in mice. *Diabetologia* 2005; 48: 1621-26.
39. Montague CT, Farooqi IS, Whitehead JP, Soos MA, Rau H, Wareham NJ, Sewter CP et al. Congenital leptin deficiency is associated with severe early-onset obesity in humans. *Nature* 1997; 387: 903-8.
40. Krude H, Biebermann H, Luck W, Horn R, Brabant G, Gruters A. Severe early-onset obesity, adrenal insufficiency and red hair pigmentation caused by POMC mutations in humans. *Nat Genet* 1998; 19: 155-7.
41. Farooqi IS, Keogh JM, Yeo GS, Lank EJ, Cheetham T, O'Rahilly S. Clinical spectrum of obesity and mutations in the melanocortin 4 receptor gene. *N Engl J Med* 2003; 348: 1085-95.
42. Petersen KF, Oral EA, Dufour S, Befroy D, Ariyan C, Yu C, Cline GW et al. Leptin reverses insulin resistance and hepatic steatosis in patients with severe lipodystrophy. *J Clin Invest* 2002; 109: 1345-50.
43. Ebihara K, Masuzaki H, Nakao K. Long-term leptin-replacement therapy for lipotrophic diabetes. *N Engl J Med* 2004; 351: 615-6.
44. Oral EA, Simha V, Ruiz E, Andewelt A, Premkumar A, Snell P, Wagner AJ et al. Leptin-replacement therapy for lipodystrophy. *N Engl J Med* 2002; 346: 570-8.
45. Frederich RC, Hamann A, Anderson S, Lollmann B, Lowell BB, Flier JS. Leptin levels reflect body lipid content in mice: evidence for diet-induced resistance to leptin action. *Nat Med* 1995; 1: 1311-4.
46. El Haschimi K, Pierroz DD, Hileman SM, Bjorbaek C, Flier JS. Two defects contribute to hypothalamic leptin resistance in mice with diet-induced obesity. *J Clin Invest* 2000; 105: 1827-32.
47. Heek M van, Compton DS, France CF, Tedesco RP, Fawzi AB, Graziano MP, Sybertz EJ et al. Diet-induced obese mice develop peripheral, but not central, resistance to leptin. *J Clin Invest* 1997; 99: 385-390.
48. Banks WA, Farrell CL. Impaired transport of leptin across the blood-brain barrier in obesity is acquired and reversible. *Am J Physiol Endocrinol Metab* 2003; 285: E10-E15.
49. Hileman SM, Pierroz DD, Masuzaki H, Bjorbaek C, El Haschimi K, Banks WA, Flier JS. Characterization of short isoforms of the leptin receptor in rat cerebral microvessels and of brain uptake of leptin in mouse models of obesity. *Endocrinology* 2002; 143: 775-83.
50. Banks WA, Coon AB, Robinson SM, Moinuddin A, Shultz JM, Nakaoka R, Morley JE. Triglycerides induce leptin resistance at the blood-brain barrier. *Diabetes* 2004; 53: 1253-60.
51. Widdowson PS, Upton R, Buckingham R, Arch J, Williams G. Inhibition of food response to intracerebroventricular injection of leptin is attenuated in rats with diet induced obesity. *Diabetes* 1997; 46: 1782-85.
52. Levin BE, Dunn-Meynell AA, Banks WA. Obesity-prone rats have normal blood-brain barrier transport but defective central leptin signaling before obesity onset. *Am J Physiol Regul Integr Comp Physiol* 2004; 286: R143-R150.
53. Irani BG, Dunn-Meynell AA, Levin BE. Altered Hypothalamic Leptin, Insulin and Melanocortin binding associated with moderate fat diet and predisposition to obesity. *Endocrinology* 2006, in press.
54. Lin S, Storlien LH, Huang XF. Leptin receptor, NPY, POMC mRNA expression in the diet-induced obese mouse brain. *Brain Res* 2000; 875: 89-95.
55. Wilsey J, Scarpace PJ. Caloric restriction reverses the deficits in leptin receptor protein and leptin signaling capacity associated with diet-induced obesity: role of leptin in the regulation of hypothalamic long-form leptin receptor expression. *J Endocrinol* 2004; 181: 297-306.
56. Scarpace PJ, Matheny M, Tumer N. Hypothalamic leptin resistance is associated with impaired leptin signal transduction in aged obese rats. *Neuroscience* 2001; 104: 1111-7.
57. Bjorbaek C, El Haschimi K, Frantz JD, Flier JS. The role of SOCS-3 in leptin signaling and leptin resistance. *J Biol Chem* 1999; 274: 30059-65.
58. Mori H, Hanada R, Hanada T, Aki D, Mashima R, Nishinakamura H, Torisu T et al. Socs3 deficiency in the brain elevates leptin sensitivity and confers resistance to diet-induced obesity. *Nat Med* 2004; 10: 739-43.
59. Munzberg H, Flier JS, Bjorbaek C. Region-specific leptin resistance within the hypothalamus of diet-induced obese mice. *Endocrinology* 2004; 145: 4880-89.
60. Carlyle M, Jones OB, Kuo JJ, Hall JE. Chronic cardiovascular and renal actions of leptin: role of adrenergic activity. *Hypertension* 2002; 39: 496-501.
61. Rahmouni K, Morgan DA, Morgan GM, Mark AL, Haynes WG. Role of selective leptin resistance in diet-induced obesity hypertension. *Diabetes* 2005; 54: 2012-18.
62. Marsh AJ, Fontes MA, Killinger S, Pawlak DB, Polson JW, Dampney RA. Cardiovascular responses evoked by leptin acting on neurons in the ventromedial and dorsomedial hypothalamus. *Hypertension* 2003; 42: 488-93.
63. Zelissen PM, Stenlof K, Lean ME, Fogteloo J, Keulen ET, Wilding J, Finer N et al. Effect of three treatment schedules of recombinant methionyl human leptin on body weight in obese adults: a randomized, placebo-controlled trial. *Diabetes Obes Metab* 2005; 7: 755-61.
64. Heymsfield SB, Greenberg AS, Fujioka K, Dixon RM, Kushner R, Hunt T, Lubina JA et al. Recombinant leptin for weight loss in obese and lean adults: a randomized, controlled, dose-escalation trial. *JAMA* 1999; 282: 1568-75.
65. Caro JF, Kolaczynski JW, Nyce MR, Ohannesian JP, Opentanova I, Goldman WH, Lynn RB et al. Decreased cerebrospinal-fluid/serum leptin ratio in obesity: a possible mechanism for leptin resistance. *Lancet* 1996; 348: 159-61.
66. Vaz M, Jennings G, Turner A, Cox H, Lambert G, Esler M. Regional sympathetic nervous activity and oxygen consumption in obese normotensive human subjects. *Circulation* 1997; 96: 3423-9.
67. Huang XF, Han M, South T, Storlien L. Altered levels of POMC, AgRP and MC4-R mRNA expression in the hypothalamus and other parts of the limbic system of mice prone or resistant to chronic high-energy diet-induced obesity. *Brain Res* 2003; 992: 9-19.
68. Huang XF, Xin X, McLennan P, Storlien L. Role of fat amount and type in ameliorating diet-induced obesity: insights at the level of hypothalamic arcuate nucleus leptin receptor, neuropeptide Y and pro-opiomelanocortin mRNA expression. *Diabetes Obes Metab* 2004; 6: 35-44.
69. Huang XF, Han M, Storlien LH. The level of NPY receptor mRNA expression in diet-induced obese and resistant mice. *Brain Res Mol Brain Res* 2003; 115: 21-8.

70. Feletou M, Galizzi JP, Levens NR. NPY receptors as drug targets for the central regulation of body weight. *CNS Neurol Disord Drug Targets* 2006; 5: 263-74.
71. Nargund RP, Strack AM, Fong TM. Melanocortin-4 receptor (MC4R) agonists for the treatment of obesity. *J Med Chem* 2006; 49: 4035-43.
72. van den Hoek AM, Heijboer AC, Corssmit EP, Voshol PJ, Romijn JA, Havekes LM, Pijl H. PYY3-36 Reinforces Insulin Action on Glucose Disposal in Mice Fed a High-Fat Diet. *Diabetes* 2004; 53: 1949-52.
73. van den Hoek AM, Heijboer AC, Corssmit EP, Romijn JA, Havekes LM, Pijl H. Chronic PYY3-36 treatment ameliorates insulin resistance in C57BL/6 mice on a high fat diet. *Am J Physiol Endocrinol Metab*, 2006, in press.
74. Foster-Schubert KE, Cummings DE. Emerging Therapeutic Strategies for Obesity. *Endocr Rev* 2006; 27: 799-793.

Samenvatting

Leptineresistentie. Pijl H. Ned Tijdschr Klin Chem Labgeneesk 2007; 32: 3-8.

Leptine wordt voornamelijk door adipocyten gemaakt. De

plasmaconcentratie van leptine stijgt met toenemen van de vetmassa. Binding van leptine aan receptoren in de hypothalamus en hersenstam coördineert de activiteit van neuronale circuits die de voedselinname remmen en het energieverbruik stimuleren. Leptinedeficiëntie en inactiverende mutaties van de leptinereceptor leiden tot ernstig overgewicht en insulineresistentie bij knaagdieren. Leptinedeficiënte mensen zijn ook morbide adipeus, hetgeen aangeeft dat leptine bij mensen, net als bij knaagdieren, een buitengewoon belangrijke rol speelt in de regulatie van de energiebalans. De plasmaleptineconcentratie is hoog bij de meeste adipeuze patiënten. Kennelijk beïnvloeden die hoge concentraties de energiebalans niet zodanig dat de vetreserve wordt teruggebracht tot 'normaal'. Er is veel bewijs dat hoogvette voeding leidt tot leptineresistentie bij knaagdieren. Er zijn ook aanwijzingen dat adipeuze mensen leptineresistent zijn. Leptineresistentie kan niet alleen de ongeremde groei van vetreserves verklaren, het zou ook ten grondslag kunnen liggen aan een aantal metabole afwijkingen die met adipositas zijn geassocieerd. Dit overzichtartikel beschrijft de huidige inzichten in de pathogenese en gevolgen van leptinedeficiëntie in knaagdieren en mensen.

Trefwoorden: leptine; adipocyten; insulineresistentie; obesitas

Ned Tijdschr Klin Chem Labgeneesk 2007; 32: 8-12

Adiponectin, role in insulin resistance, atherosclerosis and carcinogenesis

I.M. JAZET and A.E. MEINDERS

Adiponectin is one of the many adipokines secreted by adipocytes. Several isoforms are detectable in the circulation, the HMW isoform is supposed to be the most active one. Two adiponectin receptors have been cloned: Adipo R₁ and Adipo R₂ with a different distribution pattern. Stimulation of these receptors is followed by activation of intracellular signaling molecules like AMP kinase and PPAR α . Plasma adiponectin levels are lower in obesity and in men compared to women and are influenced by weight reduction, dietary intake and drugs.

Adiponectin might be the important signal protein from the adipocyte to the vascular wall in the pathogenesis of atherosclerosis. Adiponectin inhibits several processes, which play a role in atherogenesis like smooth muscle cell proliferation and foam cell formation. Adiponectin is positively related to HDL levels. Adiponectin is inversely related to several obesity-associated cancers. Adiponectin inhibits carcinogenesis directly via stimulation of apoptosis and

indirectly via inhibition of growth factors like insulin and IGF-1 and the inhibition of angiogenesis. Adiponectin has anti-diabetic properties. It decreases hepatic glucose output and increases muscular fatty acid oxidation and glucose uptake. Measuring plasma adiponectin levels may be worthwhile in the future for detecting subjects with an increased risk for the development of cancer, atherosclerosis and type 2 diabetes. Mechanisms to increase plasma levels of adiponectin and its action via Adipo R₁ and Adipo R₂ may lead to new therapeutic interventions.

Keywords: adiponectin; adiponectin receptor; obesity; atherogenesis; cancer; diabetes

Adipose tissue can be considered as an organ with various functions (1). In the last decennium it became evident that the adipocyte is secreting several different proteins, also referred to as adipokines (figure 1), that play an important role in cardiovascular integrity, metabolism, inflammation and the development of cancer. From epidemiological and clinical studies it has become clear that obesity is related to cardiovascular disease, disturbances in carbohydrate and lipid metabolism and several different forms of cancer. This relation is especially true between these diseases and the amount of visceral fat. Visceral fat cells are metabolically the most productive ones, compared with

Department of General Internal Medicine, Leiden University Medical Center

Correspondence: prof. dr. A.E. Meinders. Department of General Internal Medicine, LUMC Leiden. PO Box 9600, 2300 RC, The Netherlands
E-mail: aemeinders@lumc.nl